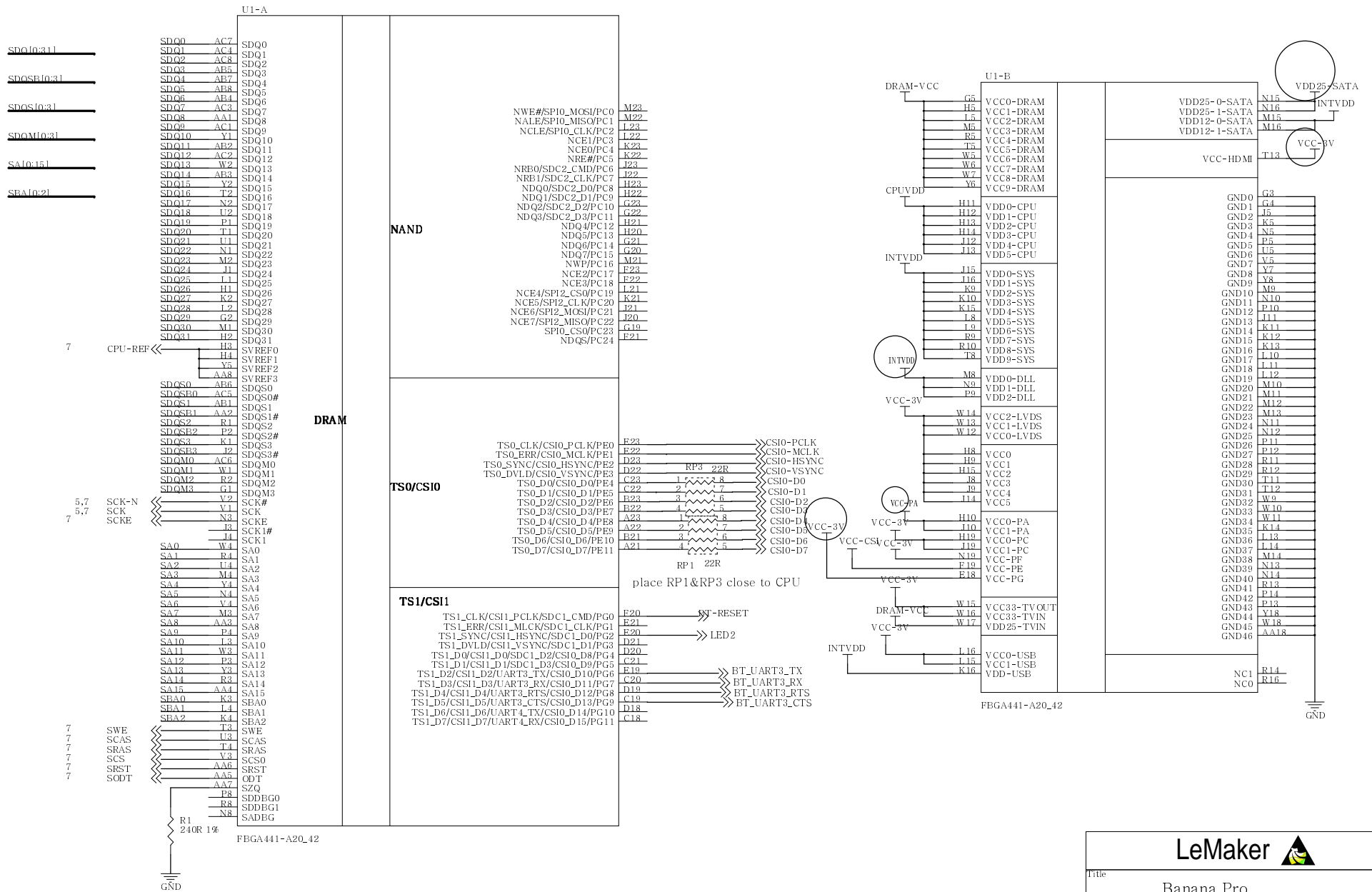
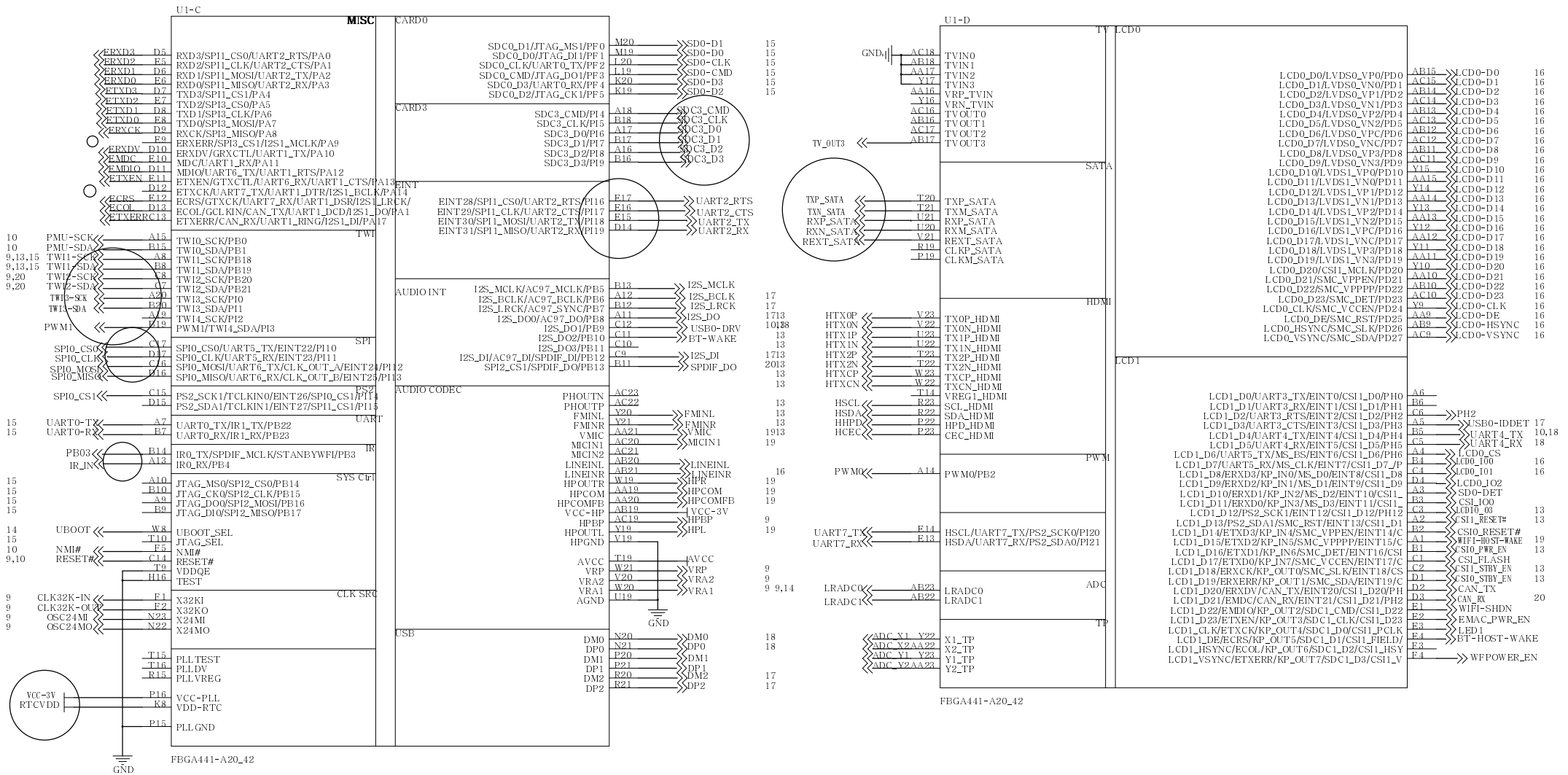


CPU1

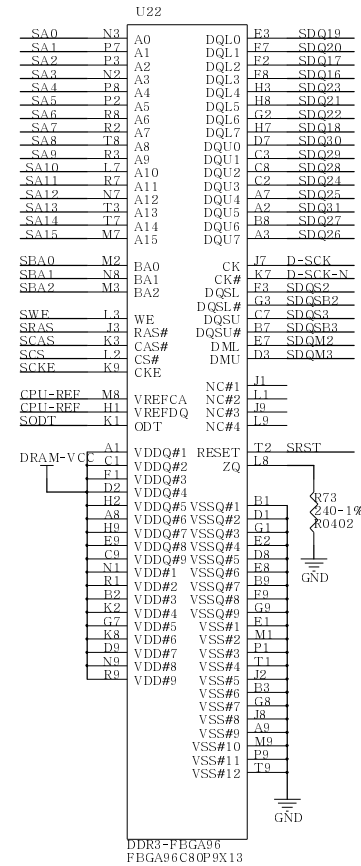
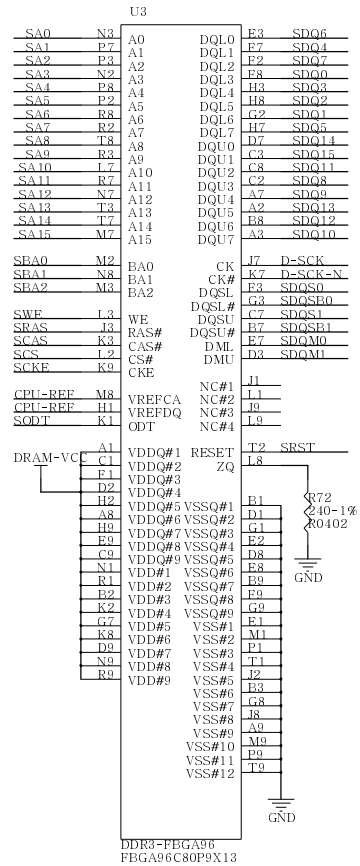
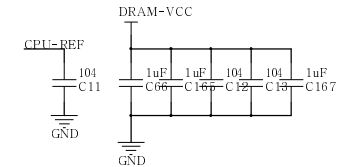
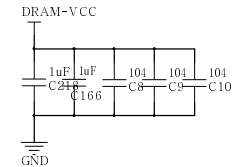
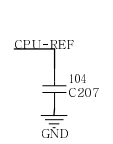
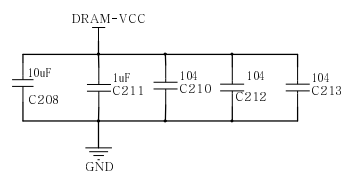
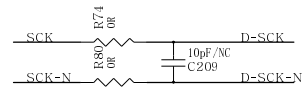
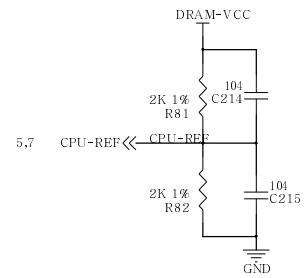


Title		
Banana Pro		
Size	Document Number	Rev
A3	CPU1	1.1
Date:	Thursday, August 22, 2013	Sheet 5 of 18

CPU2

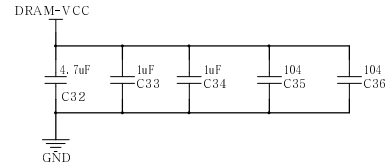


DDR3-16BITX2

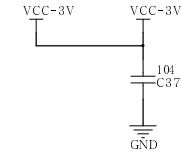


BESIDE CPU

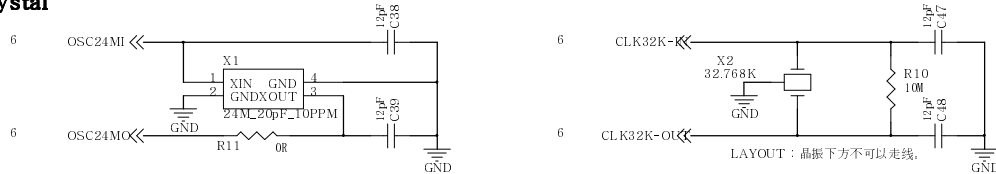
DRAM



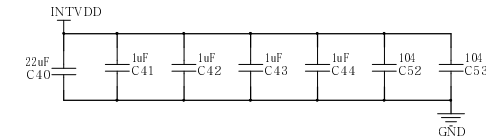
PLL



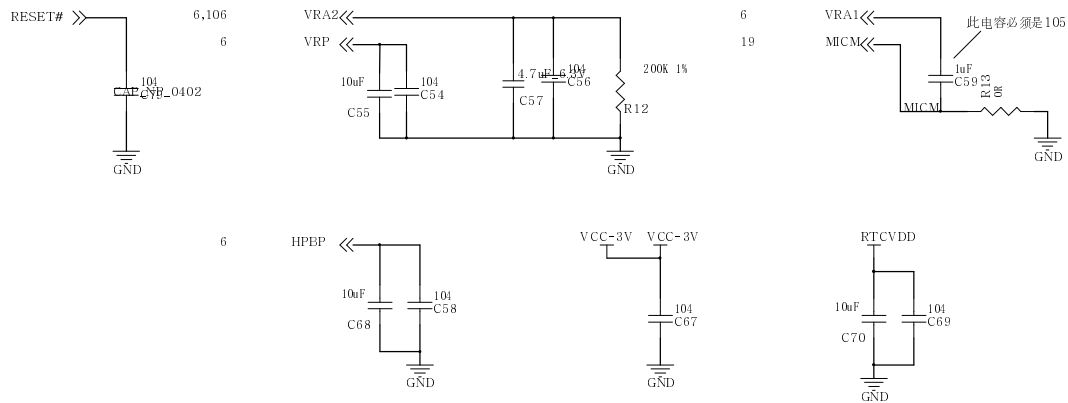
Crystal



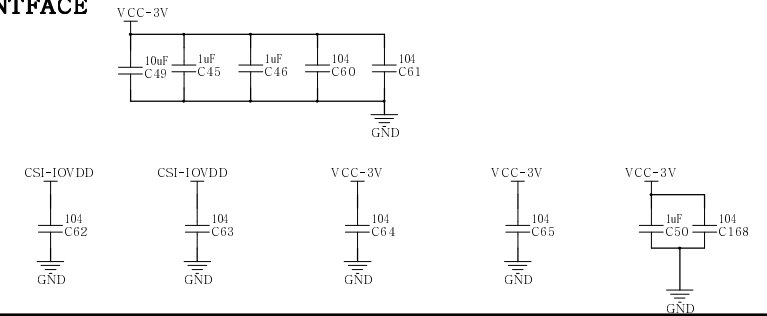
CORE



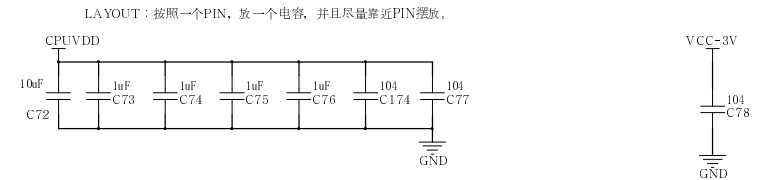
AUDIO&SYS&TP



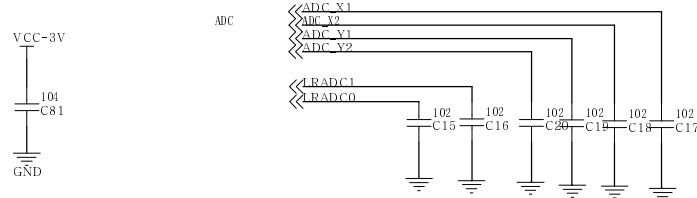
PIO-INTERFACE



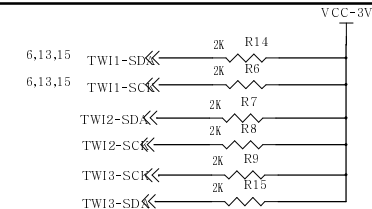
CPU&TV



USB



TWI-PULLUP



SATA

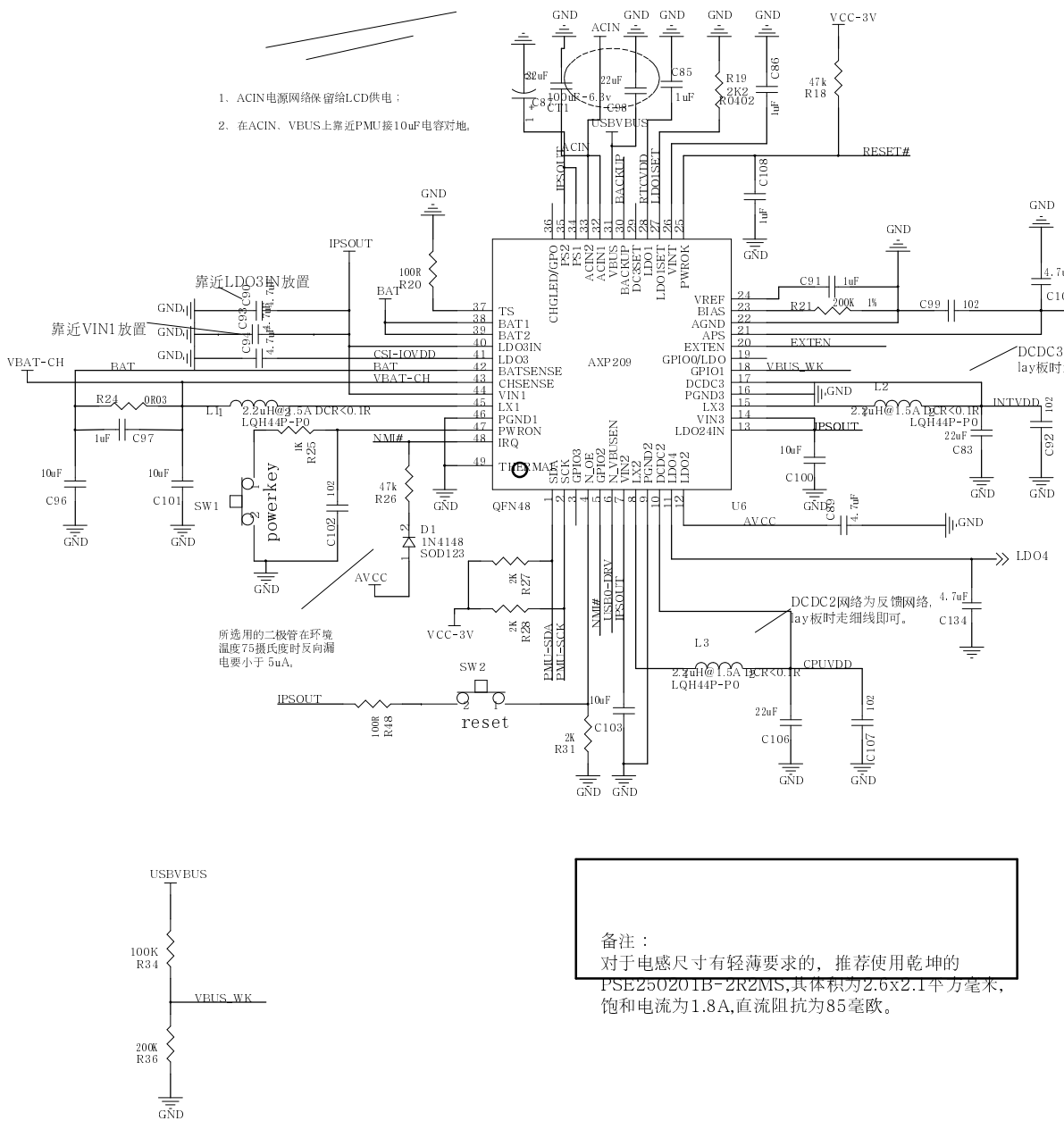
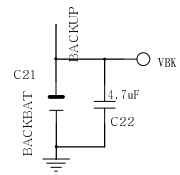
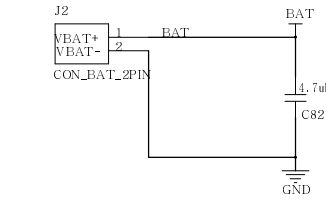
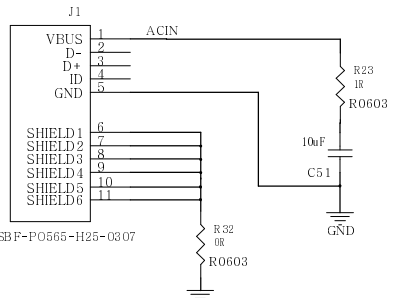


LeMaker		
Title Banana Pro		
Size A3	Document Number BESIDE CPU	Rev 1.1
Date: Thursday, August 22, 2013	Sheet 8	of 18

POWER-PMU

6	NMI#	← NMI#
6	PMU-SD#	← PMU-SDA
6	PMU-SCK	← PMU-SCK
6,18	USB0-DR	← USB0-DRV
11	EXTEN	← EXTEN
6,9	RESET#	← RESET#
18	USBVBUS	← USBVBUS

POWER INPUT



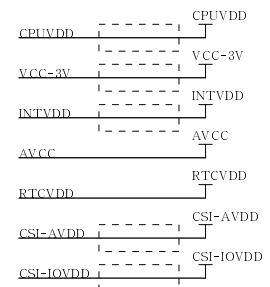
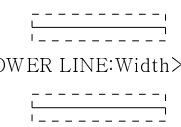
1. ACIN电源网络保留给LCD供电;
2. 在ACIN, VBUS上靠近PMU接10uF电容对地。

所选用的二极管在环境温度75摄氏度时反向漏电流小于5uA,

备注：
对于电感尺寸有轻薄要求的，推荐使用乾坤的PSE250201B-2R2MS,其体积为2.6x2.1平方毫米，饱和电流为1.8A,直流阻抗为85毫欧。

POWER LINE:Width>=80mil

POWER LINE:Width>=40mil

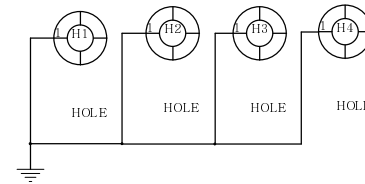
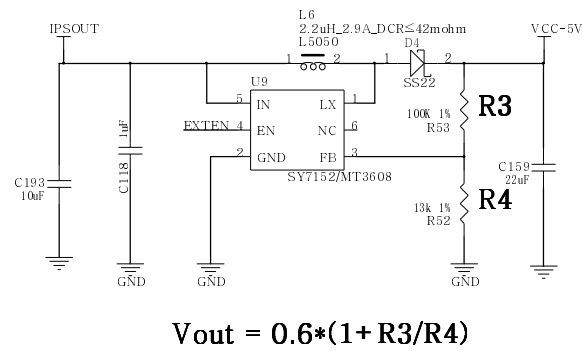
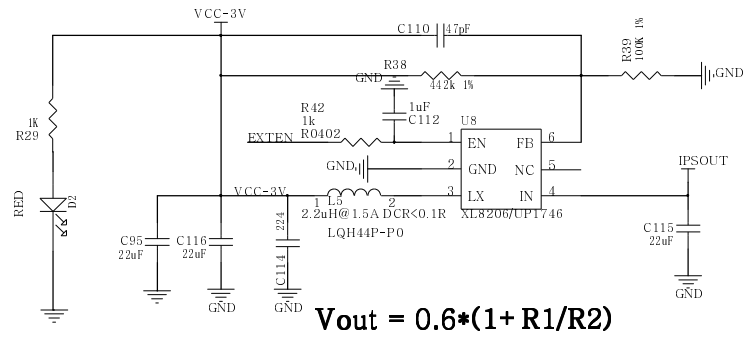
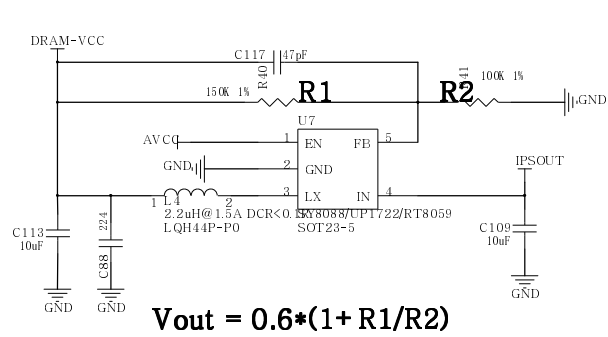


CSI-IOVDD =2.8V
CSI-AVDD =2.8V

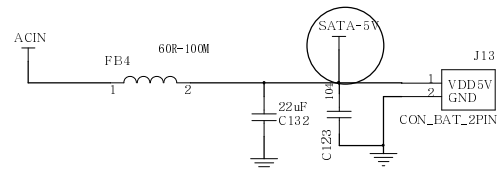
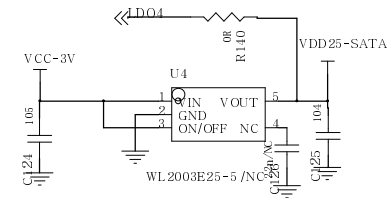
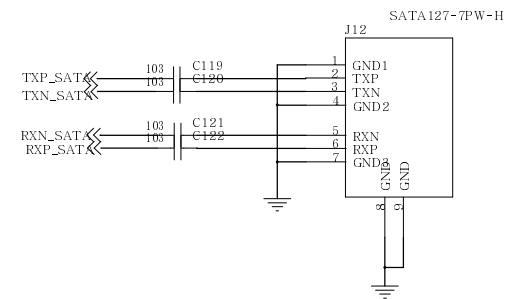
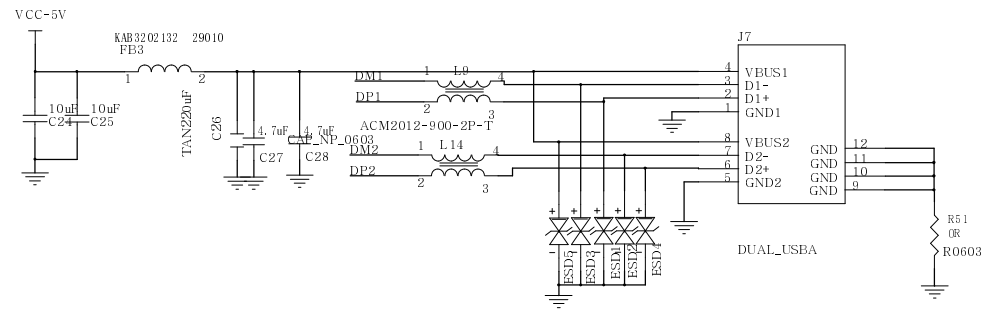
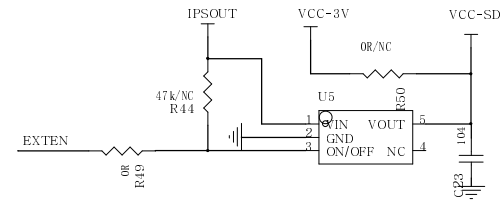
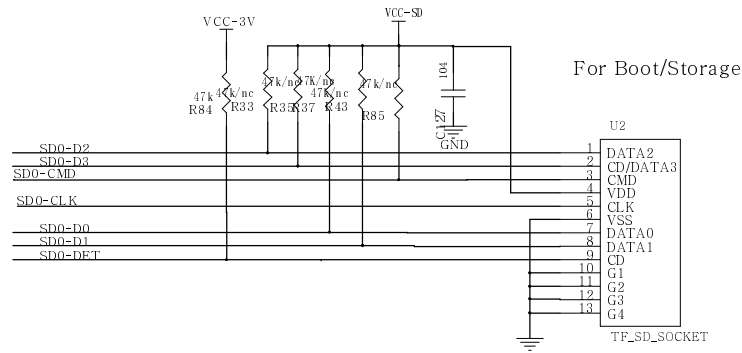
LeMaker		
Title: Banana Pro		
Size: A3	Document number: POWER1	Rev: 1.1
Date: Thursday, August 22, 2013	Sheet: 9	of 18

POWER-DC/DC

EXTEN»»» EXTEN 10



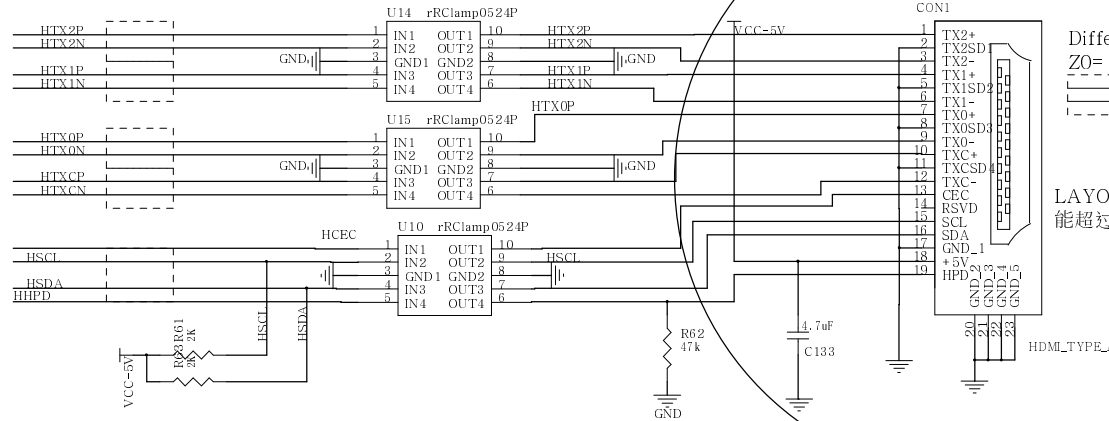
LeMaker 	
Title Banana Pro	
Size A3	Document Number POWER2
Date Thursday, August 22, 2013	Sheet 10 of 18
	Rev 1.1



HDMI-CSI

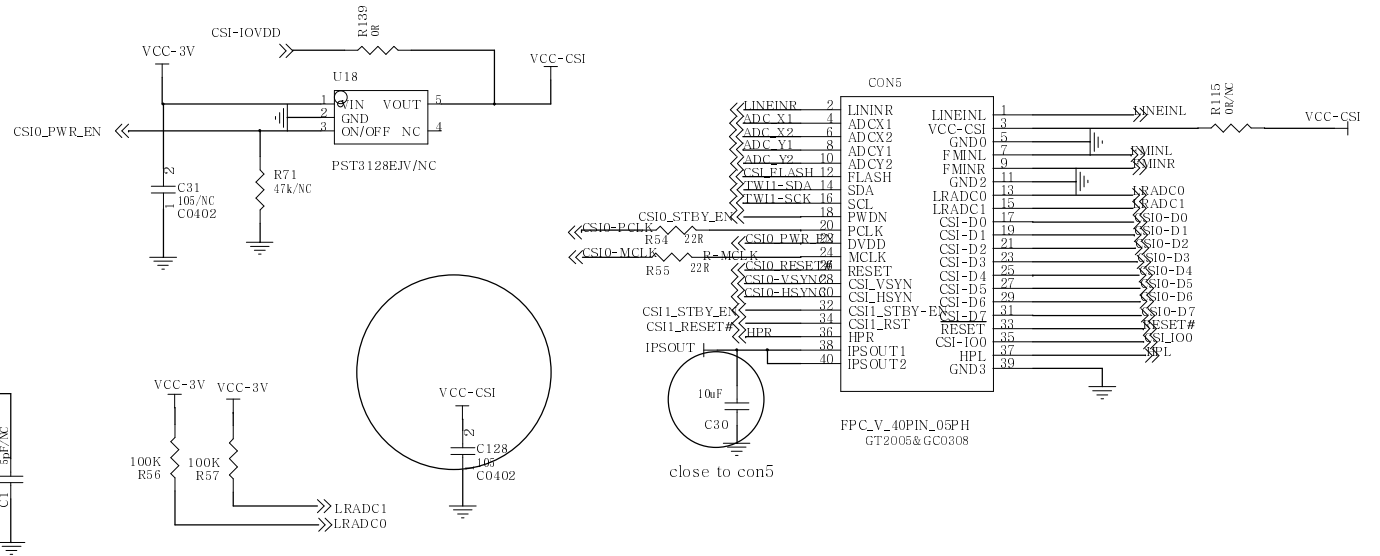
HDMI

HTX0P	HTX0P	6
HTX0N	HTX0N	6
HTX1P	HTX1P	6
HTX1N	HTX1N	6
HTX2P	HTX2P	6
HTX2N	HTX2N	6
HTXC0P	HTXC0P	6
HTXC0N	HTXC0N	6
HTXC1P	HTXC1P	6
HTXC1N	HTXC1N	6
HCEC	HCEC	6
HSCL	HSCL	6
HSDA	HSDA	6
HHPD	HHPD	6



Differential pairs
Z0= 100 ohm

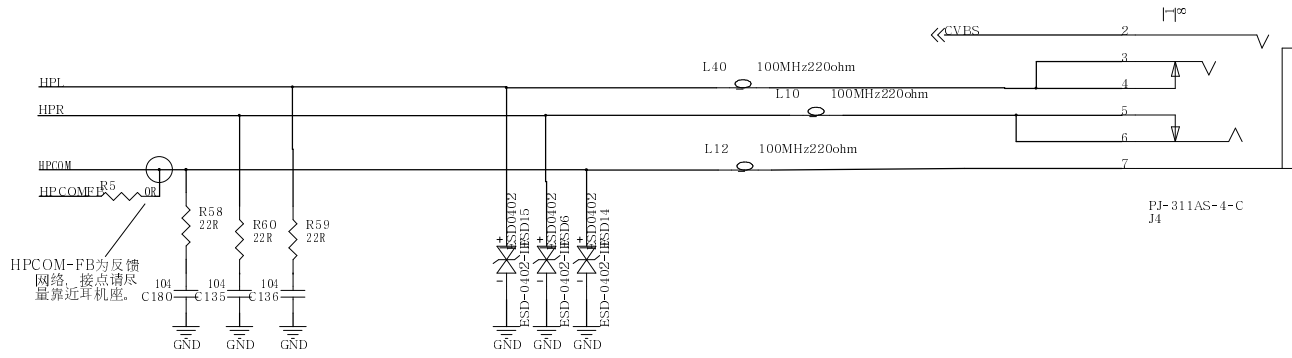
LAYOUT差分走线过孔不
能超过2个, 有完整铺地。



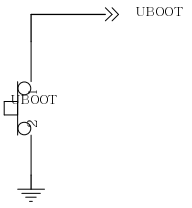
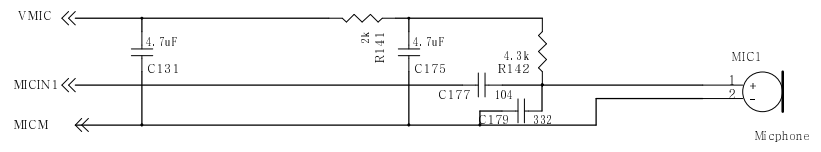
close to con5



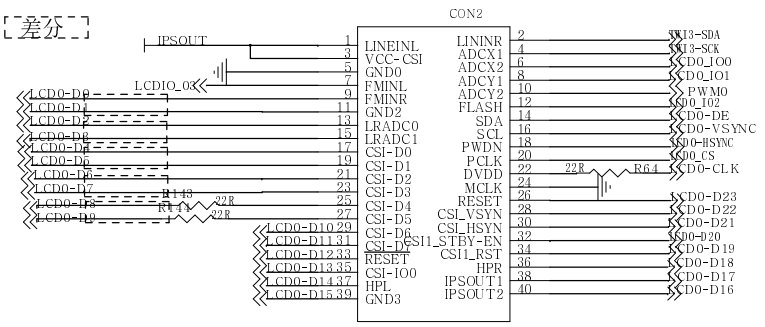
Title			
Banana Pro			
Size	Document number	Rev	
A3	HDMI-CSI	1.1	
Date:	Thursday, August 22, 2013	Sheet	12 of 18



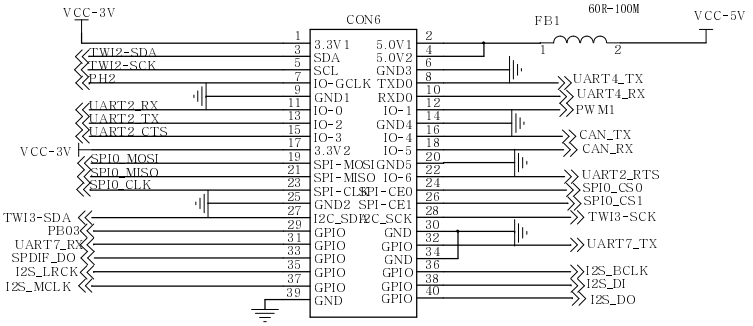
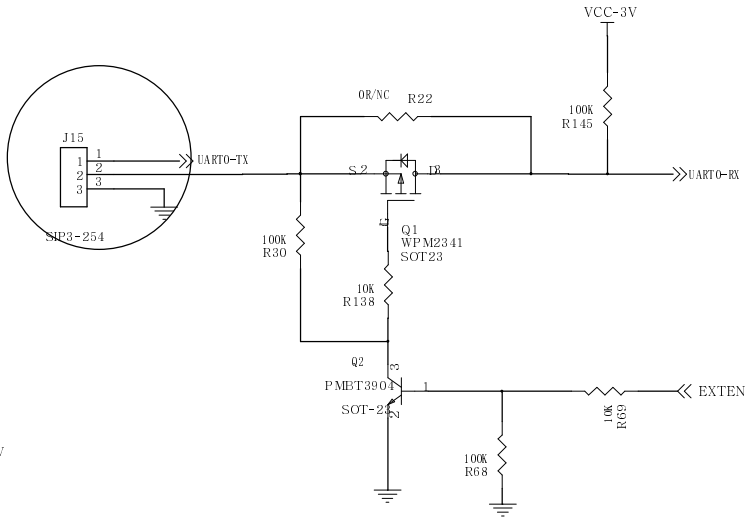
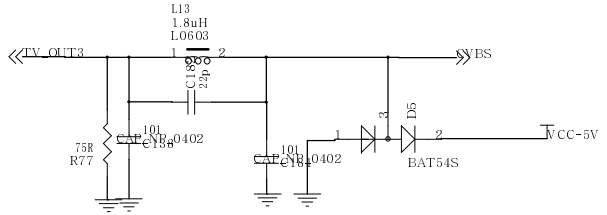
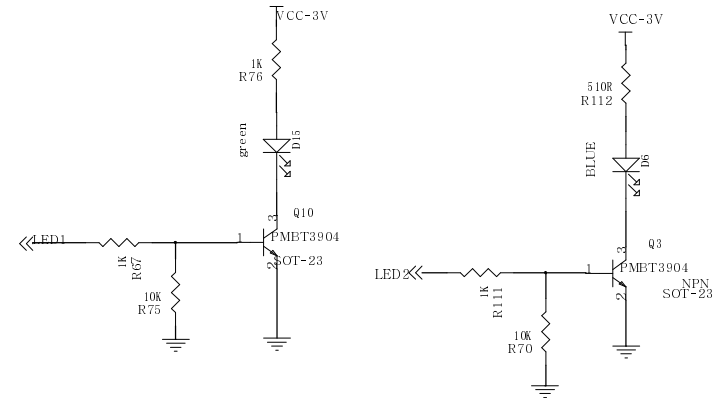
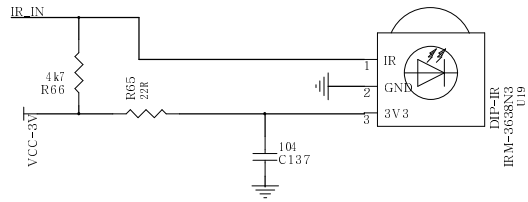
HPCOM-FB为反馈网络，接点请尽量靠近耳机座。




[差分]



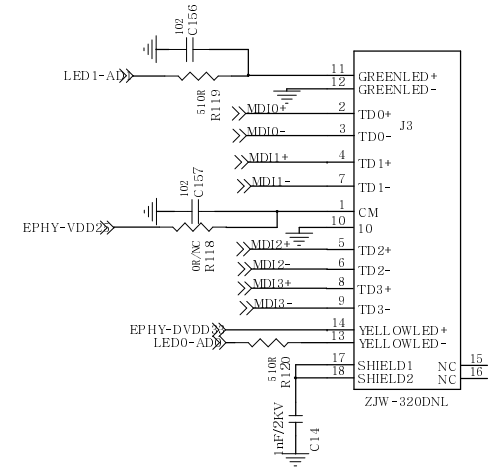
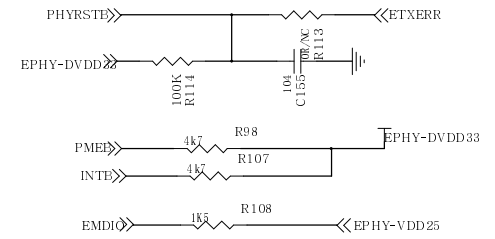
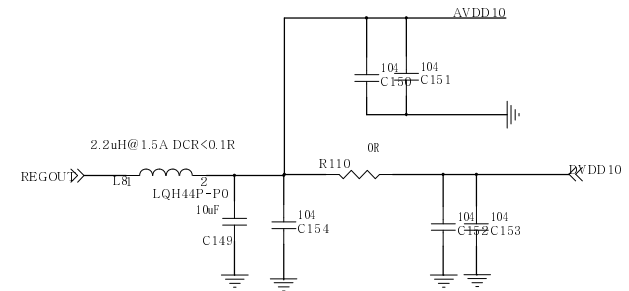
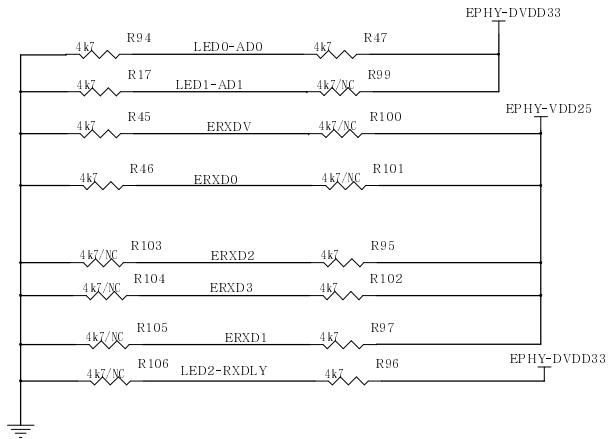
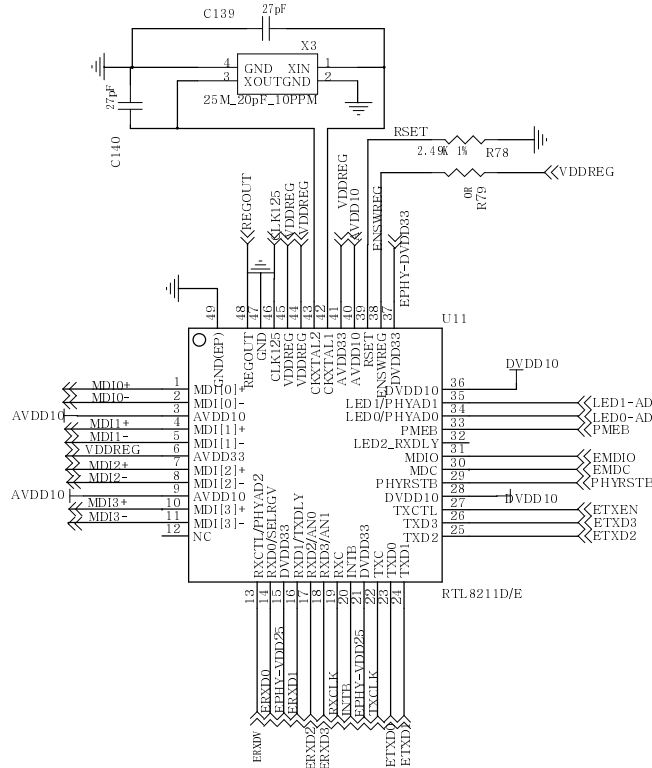
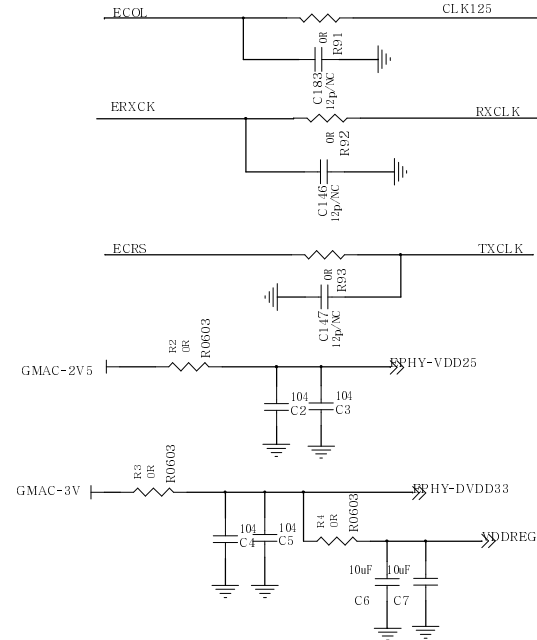
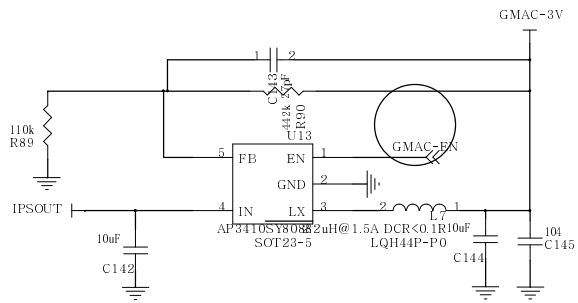
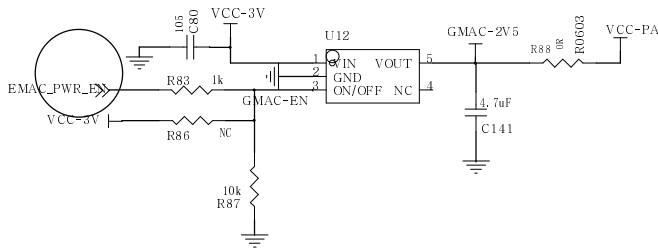
FPC_V_40PIN_05PH
GT2005&GC0308



DIP40-254

LeMaker 

Title		
Banana Pro		
Size	Document Number	Rev
A3	CARD-DEBUG-GS	1.1
Date:	Thursday, August 22, 2013	Sheet 14 of 18

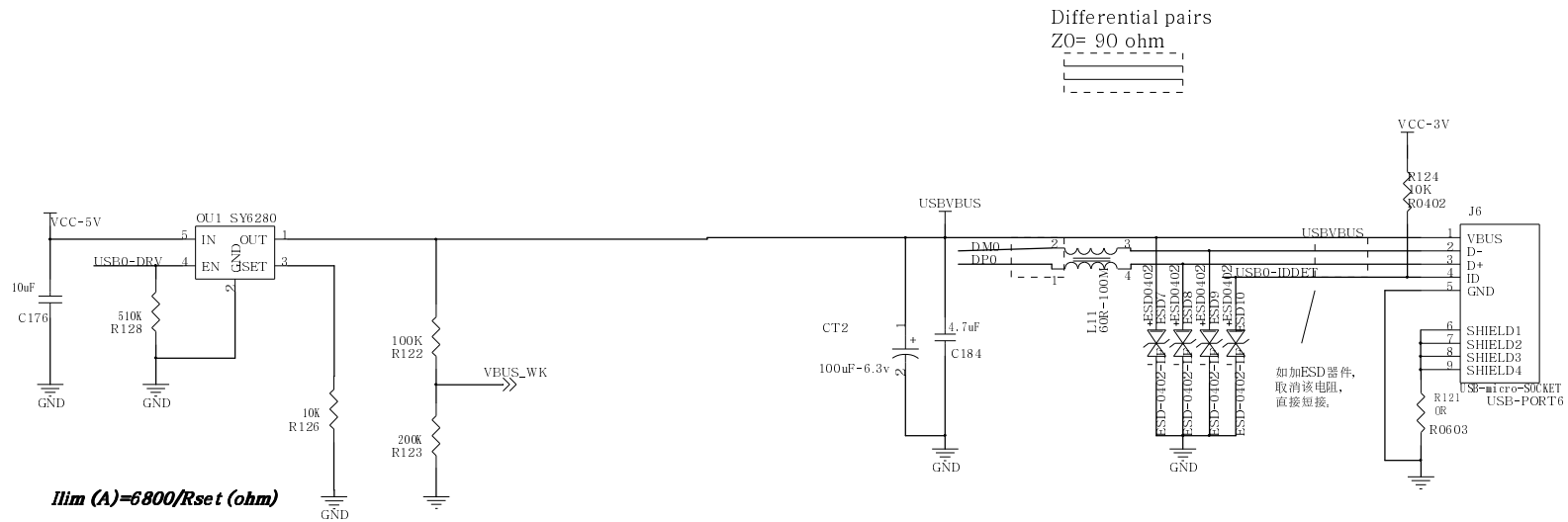


LeMaker

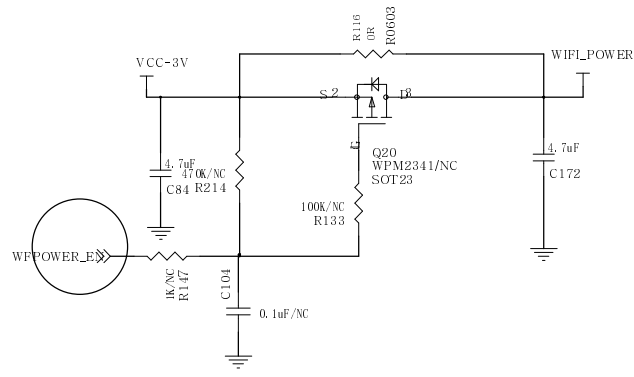
Banana Po

Size A3	Document Number LCD	Rev 1.1
Date: Thursday, August 22, 2013	Sheet 15 of 18	

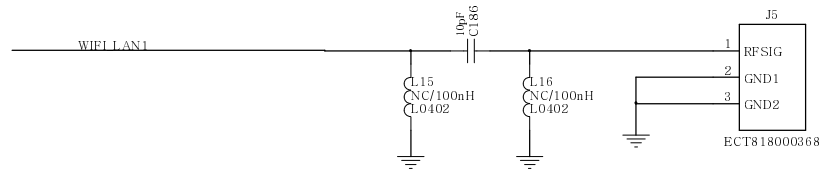
USB-USB OTG



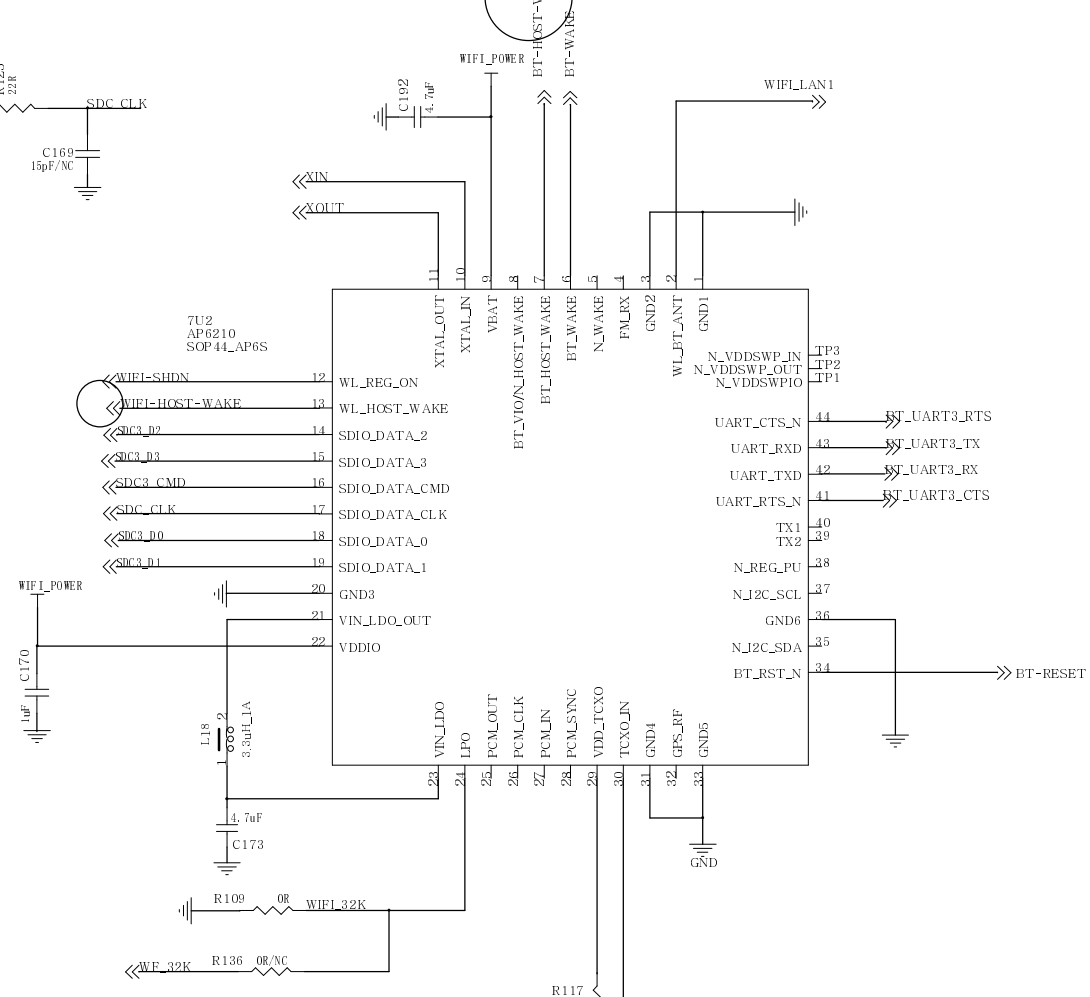
D



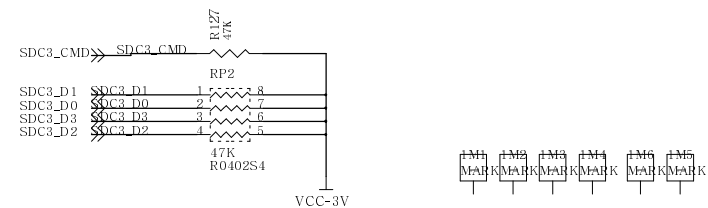
C



B



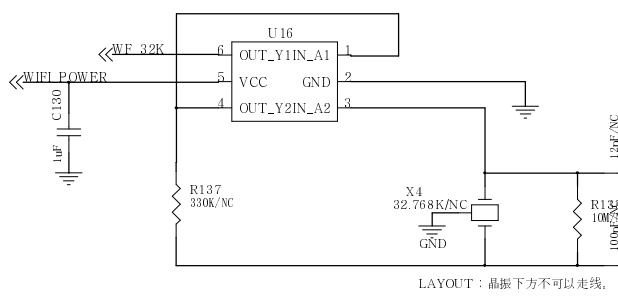
A



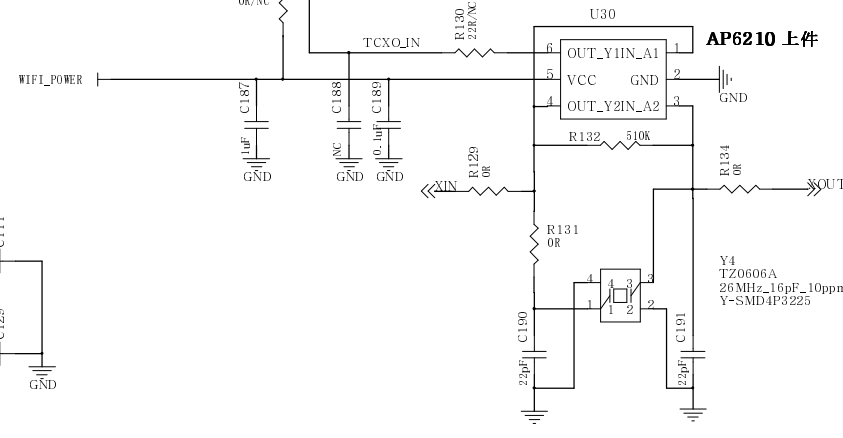
3

2

1



LAYOUT : 晶振下方不可以走线,



AP6210 上件

Y4 TZ0606A 26MHz_16pF_10ppm Y-SMD4P3225

20140916:change Version to V1.1

20140916: change HDMI to Type A

20140916: Add a GND pin to J15

20140917: change RP2 to 47K R127 to 47K change wifi SDIO to SDC3

20140917: change C1,C29 to NC

20140917: change R83 to 1K U12 power supply changed to VCC-3V

20140917: change CON26 PIN29 to PB03 D4 changed to SS22

20140917: change U8 to XL8206 2ADCDC

20141013: Change version to 1.2

20141013: add Q1 Q2 R30 R68 R69

20141013:change FB3 from 60R@100MHz to KAB3202132 29010 1.25A fuse

20141013:change R111 frpm 0R to 1K;R112 from 510R to 1K add R70 10K add Q3

20141013: add C30

20141013: add R71 R115 U18 C31

20141014: add C80 C84 R116

20141014: change C115 C116 C159 to 22uF, add c95

20141014:Change J4 add C104

20141014:Del E3,U16 R22;Add J5

20141014:Del ESP8089 SDIO wifi

20141014:change J1 to 创粤USBFB-PO565-H25-0307

20141022: Add 32KHz signal circuit for broadcom wifi

20141024: change BT uart from uart4 to uart3(with flow control)

20141024: change BT uart from uart4 to uart3(with flow control)

20141028: Add C132 C133 change C128 to 105

20141028: Add R139 C134 R140

20141030: Add FB1 change L 6 to 5*5